



R&R industrial keyboard IKL4-122-03 with Joystick IJ114-09 – for tough environment -

Front panel and housing
W x H x D [mm]
Cutout [mm]
drawing
key

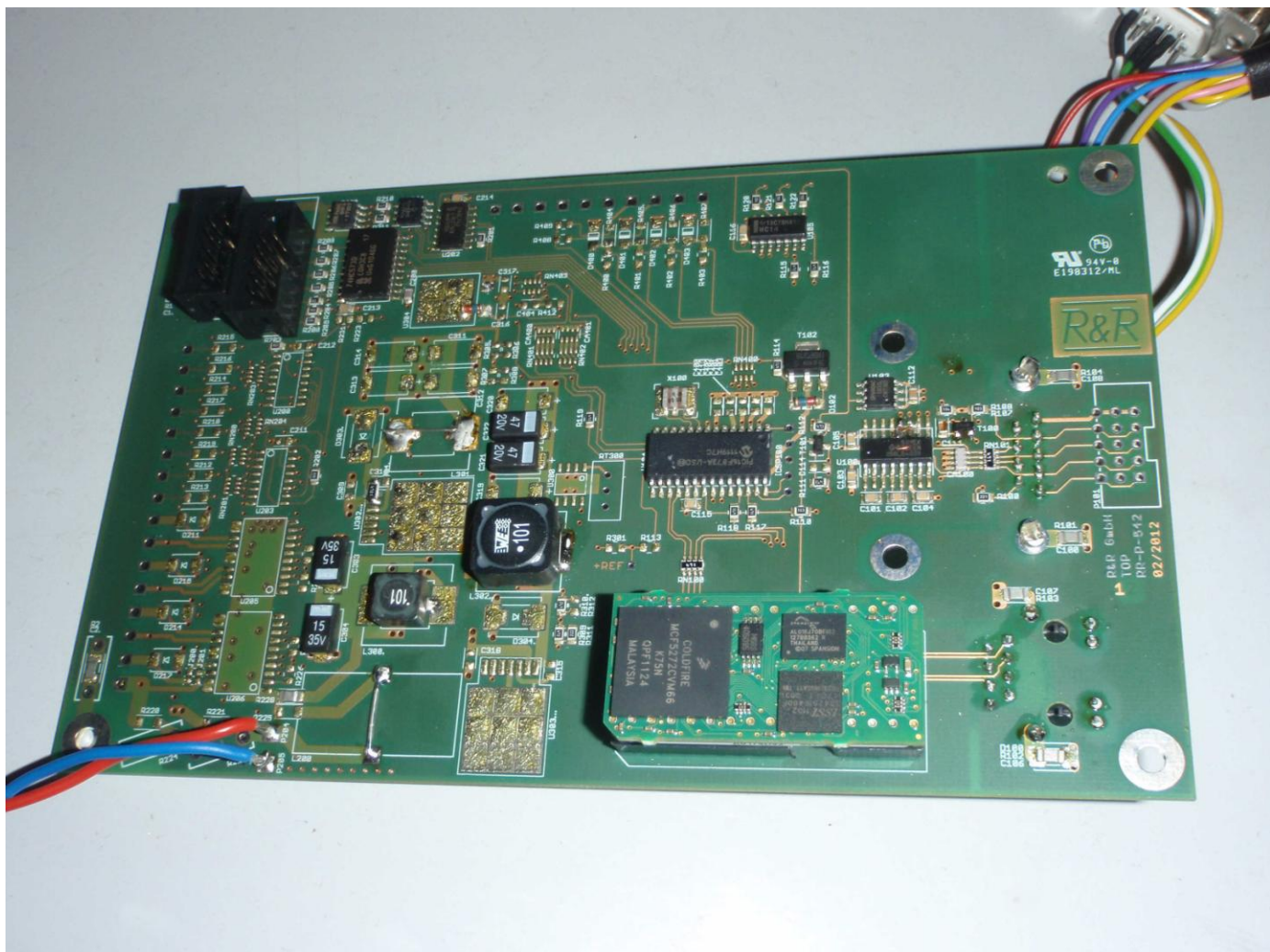
Aluminum anodized
280 x 232 x 95 + connectors
266 (+4 x 187 (+4
DNR 20208
Type LT4, 18x18 mm flat keytop
Actuation force 2N (optional 1N)
Travel 1.2 mm
Lifetime > approx. 2 Millionen switchcycles
IP65 – dustproof and waterproof
Illumination bicolour LED
inscription prined label
8 keys, 2 indicator LED (optional up to 32 keys)

Layout



Joystick

IJ114-09 siehe DNR 16501



Profinet-Controller

See datasheet DNR20629

Optional interfaces

RS232C, RS422, RS485, Profibus, Interbus, Ethernet ...



interface

Power-connector	
4pol. Phoenix Minicombicon	
3,81 Raster	
+24V	1
0V	2
-	3
-	4

Power supply range 15V up to 32V DC

Nominal 24V 350mA

Profinet-connector	
8pol. RJ45	
+TX	1
-TX	2
+RX	3
	4
	5
-RX	6
	7
	8

Service interface (RS232C)		
9pol. Sub -D male		
-	1	
	6	-
RxD	2	
	7	RTS**1
TxD	3	
	8	CTS**1
-	4	
	9	-
GND	5	

**1 = not used

COMx: - use a crossed cable
(Pin 2 X 3 Pin 5 - Pin 5)

Bit table

0	4	8	12	=Y+
1	5	9	13	=Y-
2	6	10	14	=X+
3	7	11	15	=X-